

2000 Gal. Three Compartment Single Auto Siphon Septic Tank

FLXX®

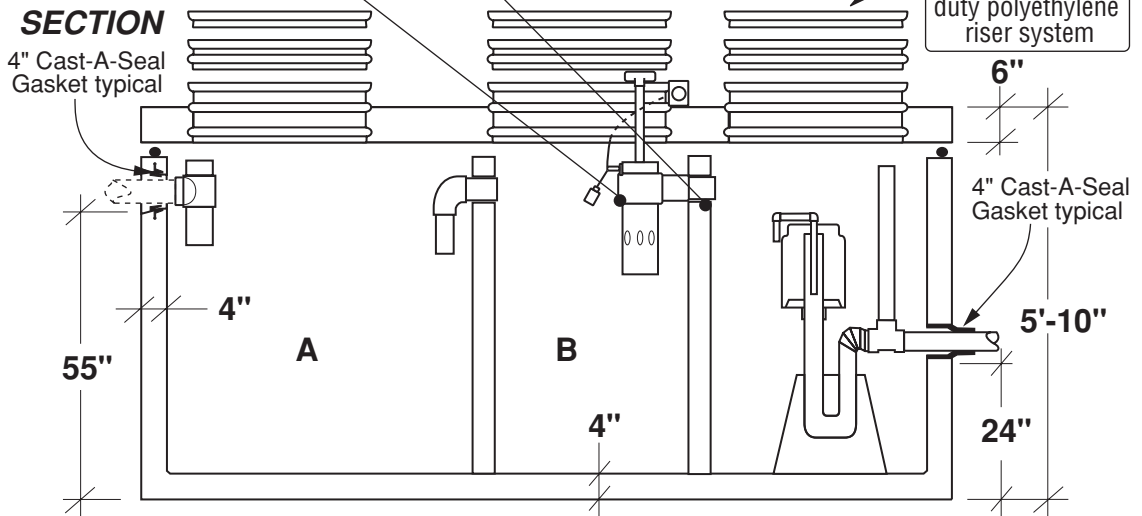
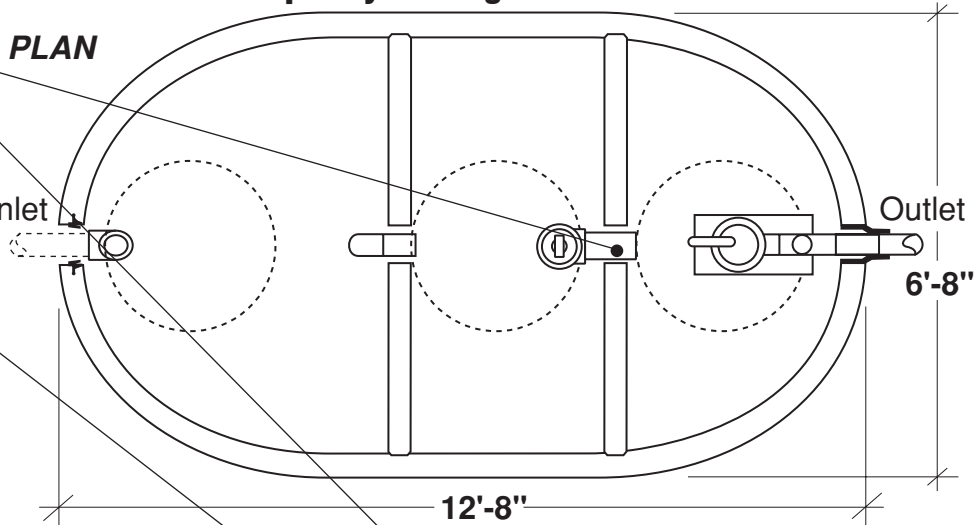
FLXX®

Total Capacity: 2000 gallons

Sealed baffle wall. Install effluent filter at this location.

Filter monitor: Optional liquid level alarm box, float control switch with bracket and J-box. Connections to electrical source by others.

- Monolithic tank meets ASTM-C-1227 Spec. for water and wastewater structures.
- Butyl rubber sealant meets Fed. Spec. SS-S-210A. (Provided with tank)
- All plumbing shown in diagram is 4" SDR 35. (Provided with tank)



Part #	Capacities (gallons)		Siphon Chamber (gallons)	Siphon / Discharge		Approximate Weights			
	A	B		Tank*	Lid	Baffle Walls	Total		
PCA-000-265	1,000	500	500	#413	130 Gal.	11,890 lbs	5,145 lbs	2,220 lbs	19,255 lbs
PCA-001-265				#417	170 Gal.				

Note: N.T.S.

* Includes 200 lbs. siphon / foundation

FLXX® 
Watertight

Front Range Precast Concrete, Inc.

5901 Dexter Street, Unit 200, Commerce City, CO 80022
Phone (303) 442-3207 • (800) 783-3207 • Fax (303) 442-3209

www.flxx.com