

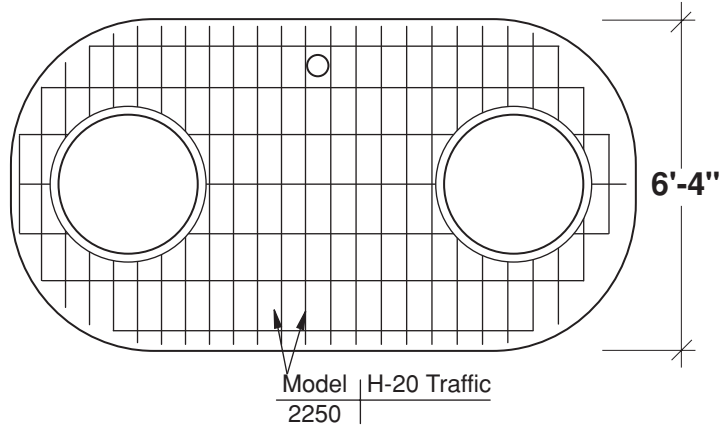
2500 Gal. Grease Interceptor

FLXX®

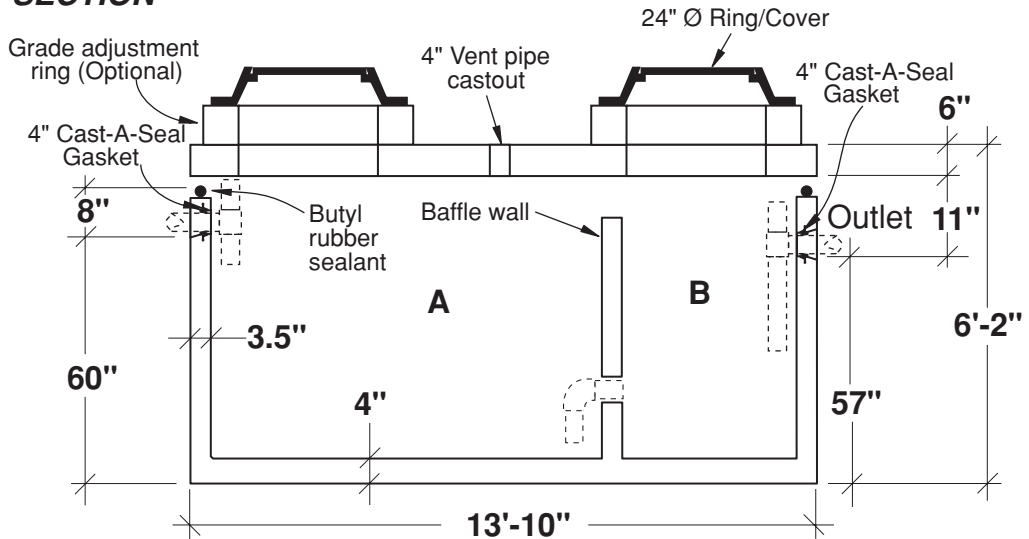
FLXX®

- Secondary chamber volume equal to 1/3 total capacity.
- Tanks meet or exceed ASTM-C-913 specifications for water and wastewater structures.
- Butyl rubber sealant meets or exceeds Fed. Spec. SS-S-210A. (Provided with tank)
- ASSHTO H-20 traffic rated.
- Plumbing shown in diagram provided by others.

TOP SLAB - TYPICAL REINFORCEMENT



SECTION



| Part # | Capacities | | | | Approximate Weights | | | |
|-------------|--------------|---|-----------|---|---------------------|-----------|-------------|------------|
| | Section/Gal. | | Cubic Ft. | | Tank | Lid | Baffle Wall | Total |
| PCA-000-313 | A | B | A | B | 11,890 lbs | 5,400 lbs | 1,560 lbs | 18,850 lbs |

Note: N.T.S.

FLXX® 
Watertight
Front Range Precast Concrete, Inc.
 5901 Dexter Street, Unit 200, Commerce City, CO 80022
 Phone (303) 442-3207 • (800) 783-3207 • Fax (303) 442-3209
www.flxx.com