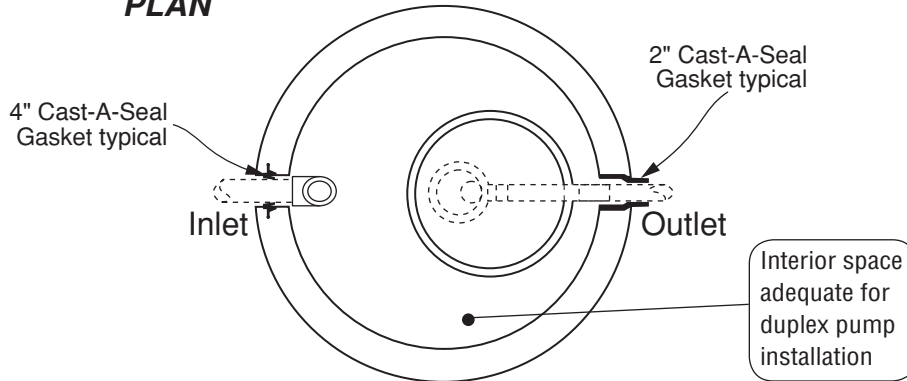


400 Gal. Electric Lift Station

FLXX®

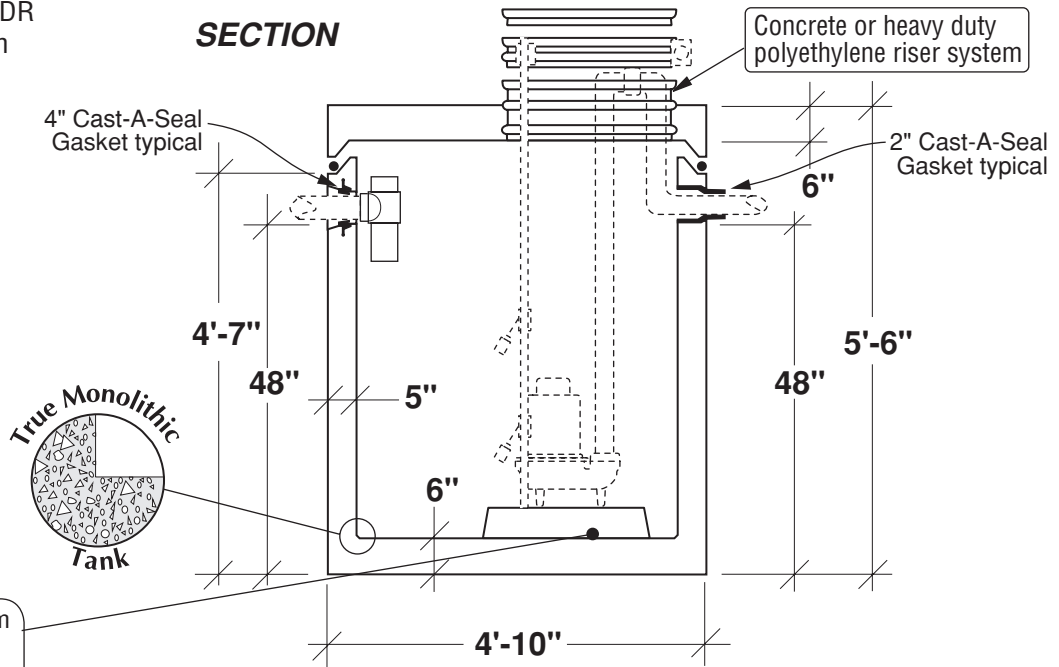
FLXX®

PLAN



- Monolithic tank meets ASTM-C-1227 Spec. for water and wastewater structures.
- Butyl rubber sealant meets Fed. Spec. SS-S-210A. (Provided with tank)
- All plumbing shown in diagram is 4" SDR 35. (Provided with tank)

SECTION



Concrete platform positions pump above sludge

Part #	Discharge / Cycle	Approximate Weights		
		Tank	Lid	Total
PCA-000-294	7.8 Gal / Vertical Inch	4,850 lbs	1,520 lbs	6,370 lbs

Note: N.T.S.

FLXX® 
Watertight
Front Range Precast Concrete, Inc.
 5901 Dexter Street, Unit 200, Commerce City, CO 80022
 Phone (303) 442-3207 • (800) 783-3207 • Fax (303) 442-3209
www.fxx.com