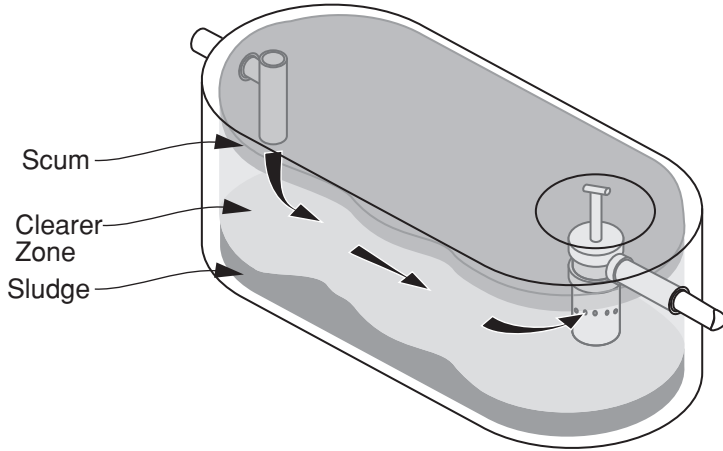


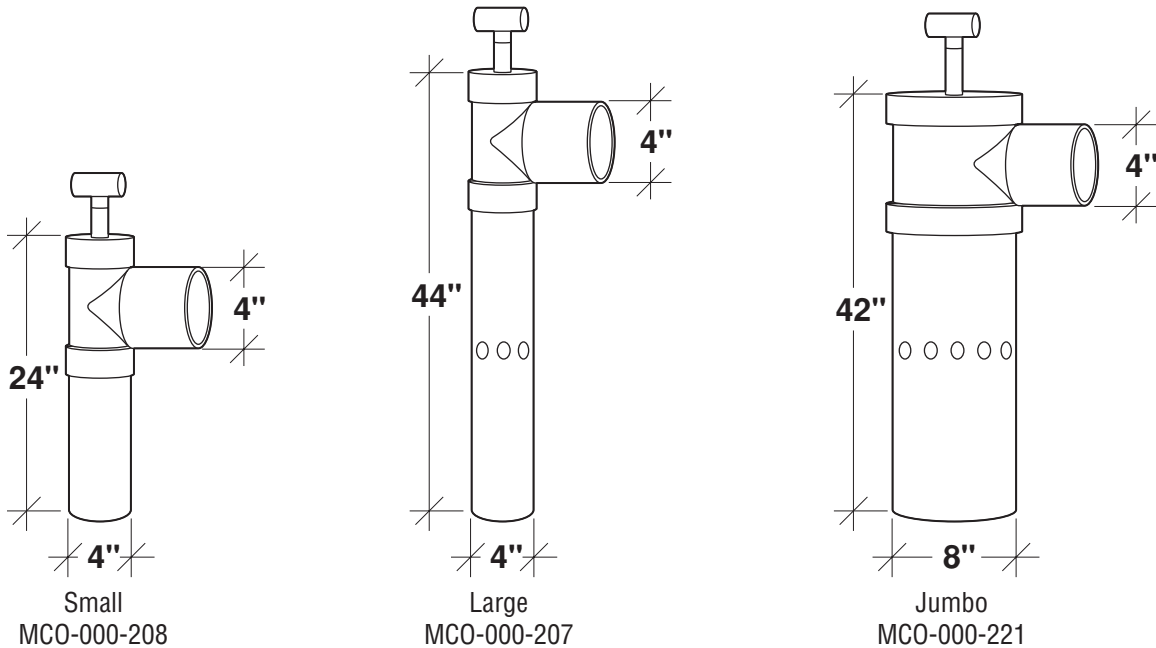
# Operation of Effluent Filters



Effluent filters retain particle solids in the tank, protecting drain fields from clog-up and extending absorption field life.

Effluent filters work by using gravity to force effluent through a screened filtering surface. Larger particles are detained and shed to the bottom of the tank. Biological colonies form on the filtering surface, trapping and decomposing even smaller particles. Total suspended solids at the effluent outlet are greatly reduced.

Free-flowing effluent filters need little maintenance; permanent washable filter cartridges are constructed of PVC and Polyethylene, inert to deterioration in waste water.



Note: N.T.S.

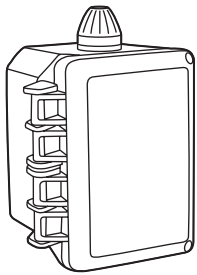
**FLXX**®  
Watertight  
Front Range Precast Concrete, Inc.  
5901 Dexter Street, Unit 200, Commerce City, CO 80022  
Phone (303) 442-3207 • (800) 783-3207 • Fax (303) 442-3209  
[www.flxx.com](http://www.flxx.com)

# The "Full Monty"

FLXX®

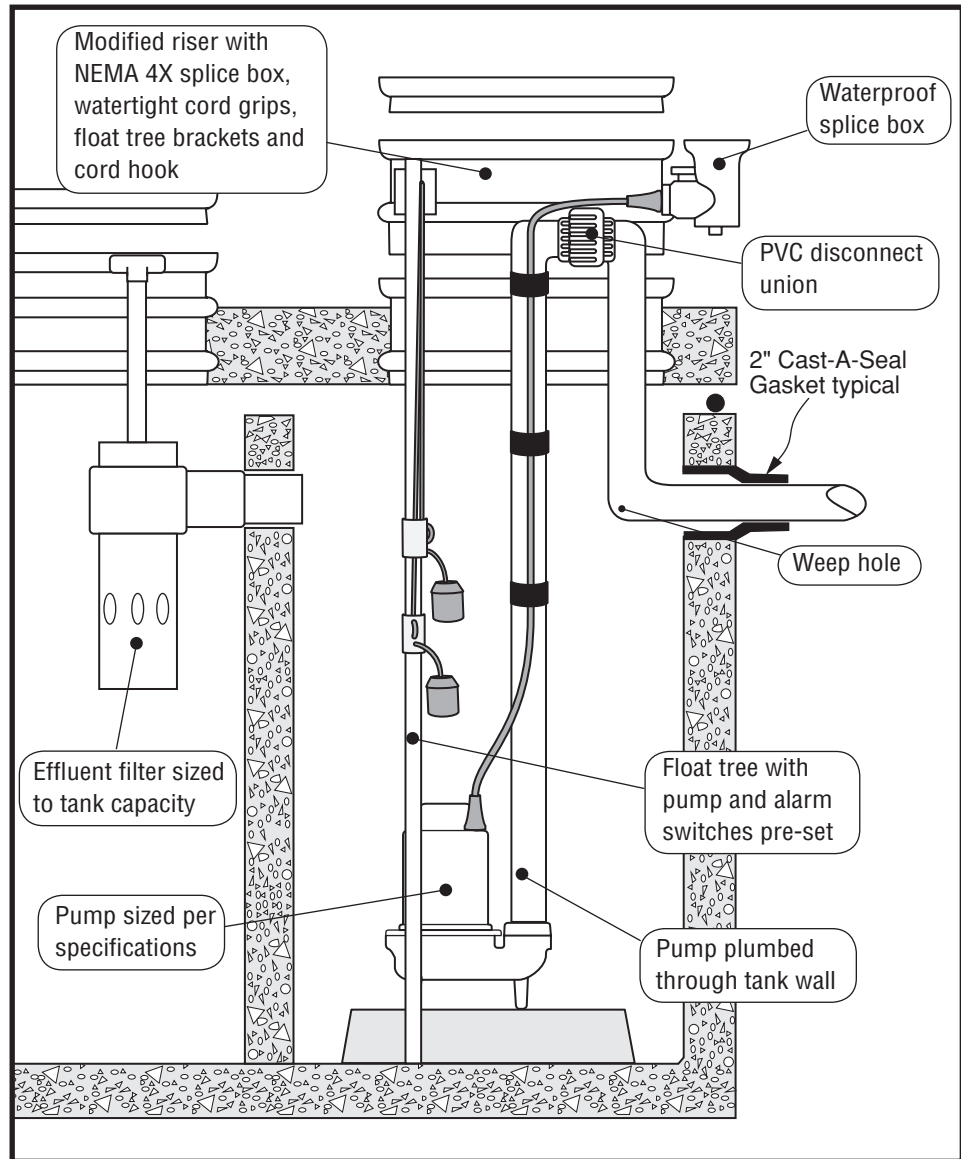
FLXX®

## Electric Lift Chambers and Septic Tanks Fully Equipped and Ready for Final Installation



### Alarm System Features

- 2 HOA pump switches
- Magnetic motor contacts
- Red alarm beacon
- Alarm horn



Note: N.T.S.

**FLXX®**   
Watertight

Front Range Precast Concrete, Inc.

5901 Dexter Street, Unit 200, Commerce City, CO 80022  
Phone (303) 442-3207 • (800) 783-3207 • Fax (303) 442-3209  
[www.flxx.com](http://www.flxx.com)

# 1250 Gal. Three Compartment Single Auto Siphon Septic Tank

FLXX®

FLXX®

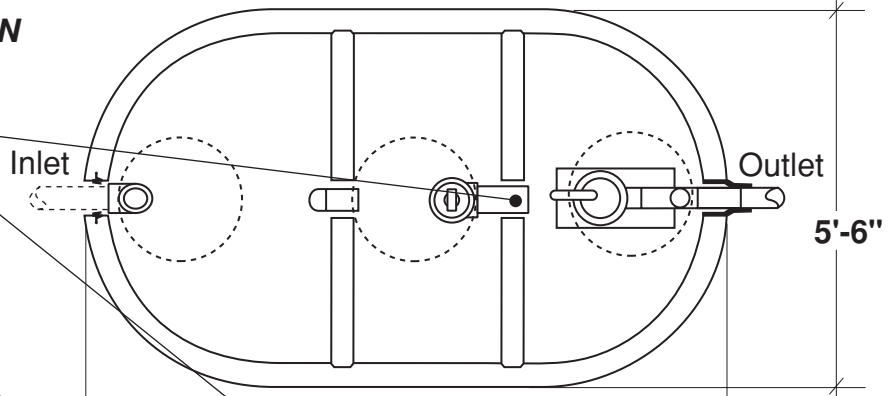
Total Capacity: 1390 gallons

PLAN

Sealed baffle wall.  
Install effluent filter  
at this location.

Filter monitor: Optional  
liquid level alarm box,  
float control switch  
with bracket and J-box.  
Connections to electrical  
source by others.

Concrete or heavy  
duty polyethylene  
riser system

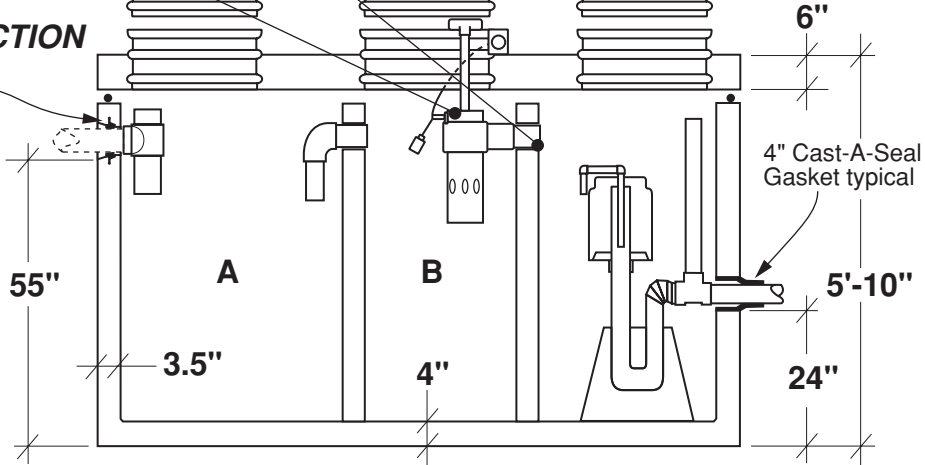


SECTION

4" Cast-A-Seal  
Gasket typical

4" Cast-A-Seal  
Gasket typical

- Monolithic tank meets ASTM-C-1227 Spec. for water and wastewater structures.
- Butyl rubber sealant meets Fed. Spec. SS-S-210A. (Provided with tank)
- All plumbing shown in diagram is 4" SDR 35. (Provided with tank)



\* Includes 200 lbs. siphon / foundation

Part #	Capacities (gallons)		Siphon Chamber (gallons)	Siphon / Discharge		Approximate Weights			
	A	B		Tank*	Lid	Baffle Walls	Total		
PCA-000-262	640	420	330	#413	85 Gal.	8,630 lbs	3,370 lbs	1,820 lbs	13,820 lbs
PCA-001-262				#417	110 Gal.				

Note: N.T.S.

**FLXX®**   
Watertight

Front Range Precast Concrete, Inc.

5901 Dexter Street, Unit 200, Commerce City, CO 80022  
Phone (303) 442-3207 • (800) 783-3207 • Fax (303) 442-3209  
[www.flxx.com](http://www.flxx.com)

**FLXX**

# 1500 Gal. Three Compartment Single Auto Siphon Septic Tank

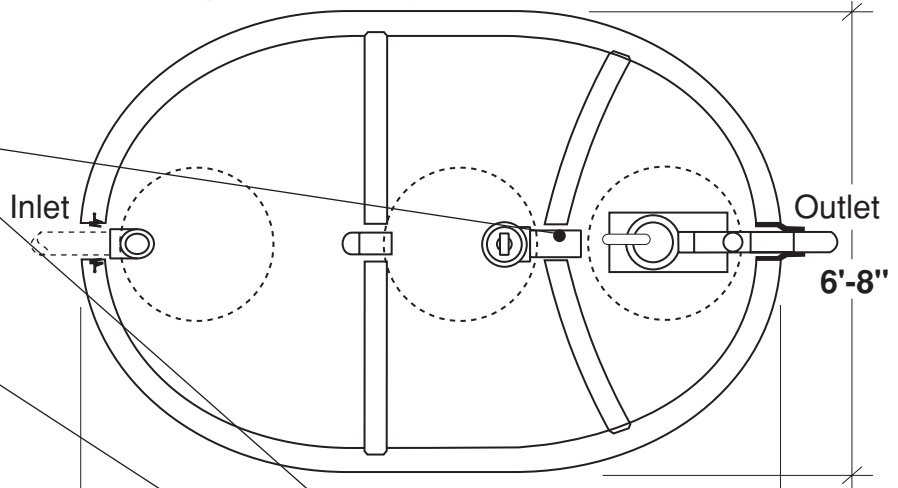
**2.0**  
**FLXX**

**Total Capacity: 1535 gallons**

**PLAN**

Sealed baffle wall.  
Install effluent filter  
at this location.

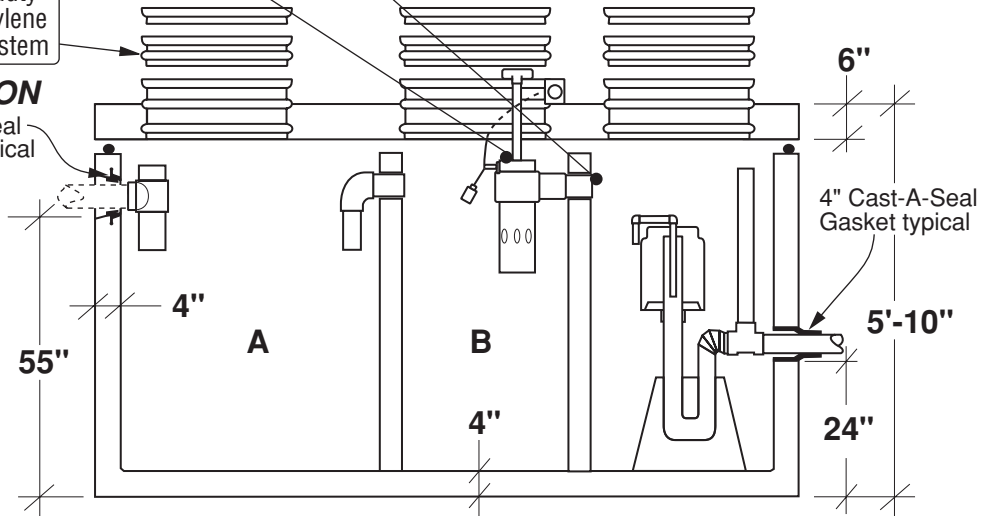
Filter monitor: Optional  
liquid level alarm box,  
float control switch with  
bracket and J-box.  
Connections to electrical  
source by others.



Concrete or  
heavy duty  
polyethylene  
riser system

**SECTION**

4" Cast-A-Seal  
Gasket typical



- Monolithic tank meets ASTM-C-1227 Spec. for water and wastewater structures.
- Butyl rubber sealant meets Fed. Spec. SS-S-210A. (Provided with tank)
- All plumbing shown in diagram is 4" SDR 35. (Provided with tank)

Part #	Capacities (gallons)		Siphon Chamber (gallons)	Siphon / Discharge		Approximate Weights			
	A	B		Tank*	Lid	Baffle Walls	Total		
PCA-000-263	675	450	410	#413	115 Gal.	9,815 lbs	3,900 lbs	2,220 lbs	15,935 lbs
PCA-001-263				#417	150 Gal.				

Note: N.T.S.

\* Includes 200 lbs. siphon / foundation



Watertight

**Front Range Precast Concrete, Inc.**

5901 Dexter Street, Unit 200, Commerce City, CO 80022  
Phone (303) 442-3207 • (800) 783-3207 • Fax (303) 442-3209  
[www.flxx.com](http://www.flxx.com)

# 2000 Gal. Three Compartment Single Auto Siphon Septic Tank

FLXX®

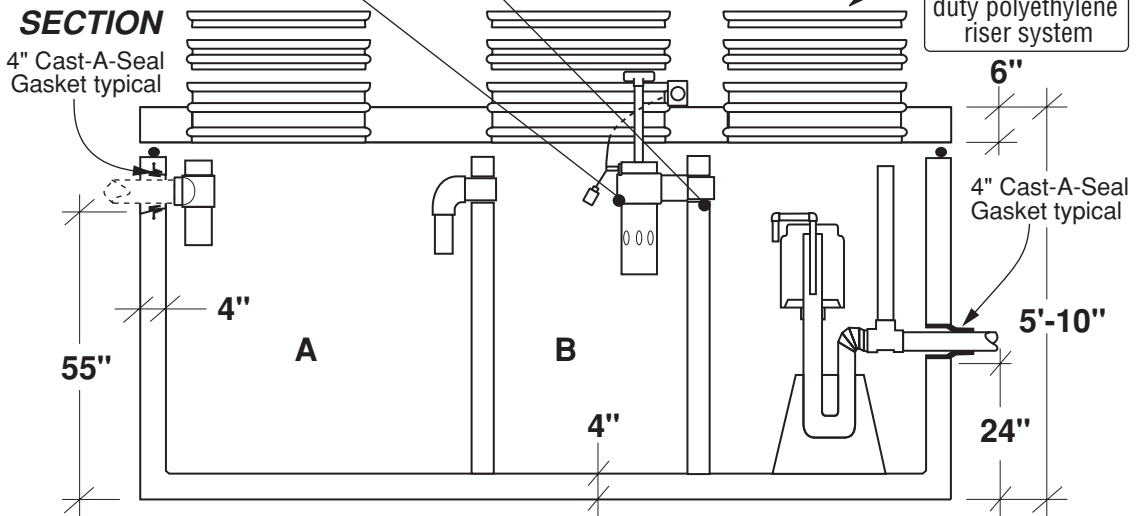
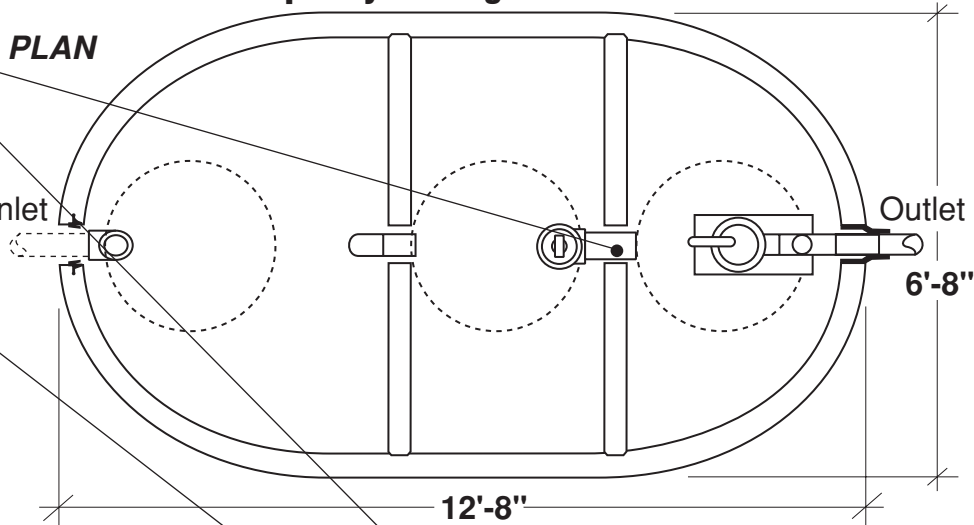
FLXX®

Total Capacity: 2000 gallons

Sealed baffle wall. Install effluent filter at this location.

Filter monitor: Optional liquid level alarm box, float control switch with bracket and J-box. Connections to electrical source by others.

- Monolithic tank meets ASTM-C-1227 Spec. for water and wastewater structures.
- Butyl rubber sealant meets Fed. Spec. SS-S-210A. (Provided with tank)
- All plumbing shown in diagram is 4" SDR 35. (Provided with tank)



Part #	Capacities (gallons)		Siphon Chamber (gallons)	Siphon / Discharge		Approximate Weights			
	A	B				Tank*	Lid	Baffle Walls	Total
PCA-000-265	1,000	500	500	#413	130 Gal.	11,890 lbs	5,145 lbs	2,220 lbs	19,255 lbs
PCA-001-265				#417	170 Gal.				

Note: N.T.S.

\* Includes 200 lbs. siphon / foundation

**FLXX®**   
Watertight

Front Range Precast Concrete, Inc.

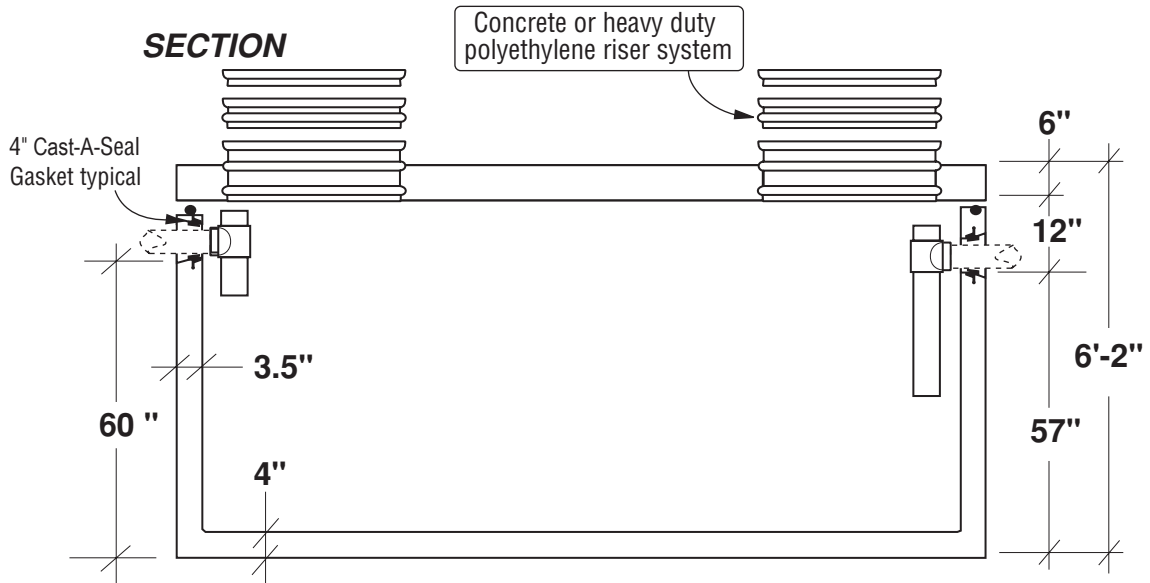
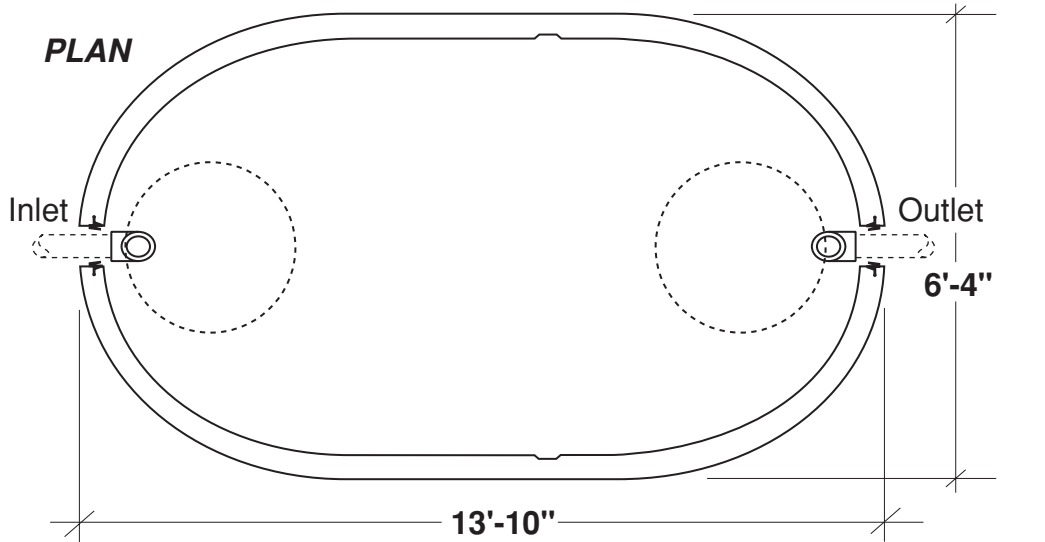
5901 Dexter Street, Unit 200, Commerce City, CO 80022  
Phone (303) 442-3207 • (800) 783-3207 • Fax (303) 442-3209  
[www.flxx.com](http://www.flxx.com)

# 2500 Gal. Single Compartment Septic Tank

FLXX®

FLXX®

- Monolithic tank meets ASTM-C-1227 Spec. for water and wastewater structures.
- Butyl rubber sealant meets Fed. Spec. SS-S-210A. (Provided with tank)
- All plumbing shown in diagram is 4" SDR 35. (Provided with tank)



Part #	Capacity (gallons)	Approximate Weights		
		Tank	Lid	Total
PCA-000-326	2450	11,890 lbs	5,400 lbs	17,290 lbs

Note: N.T.S.

**FLXX®**   
**Watertight**  
**Front Range Precast Concrete, Inc.**  
 5901 Dexter Street, Unit 200, Commerce City, CO 80022  
 Phone (303) 442-3207 • (800) 783-3207 • Fax (303) 442-3209  
[www.flxx.com](http://www.flxx.com)

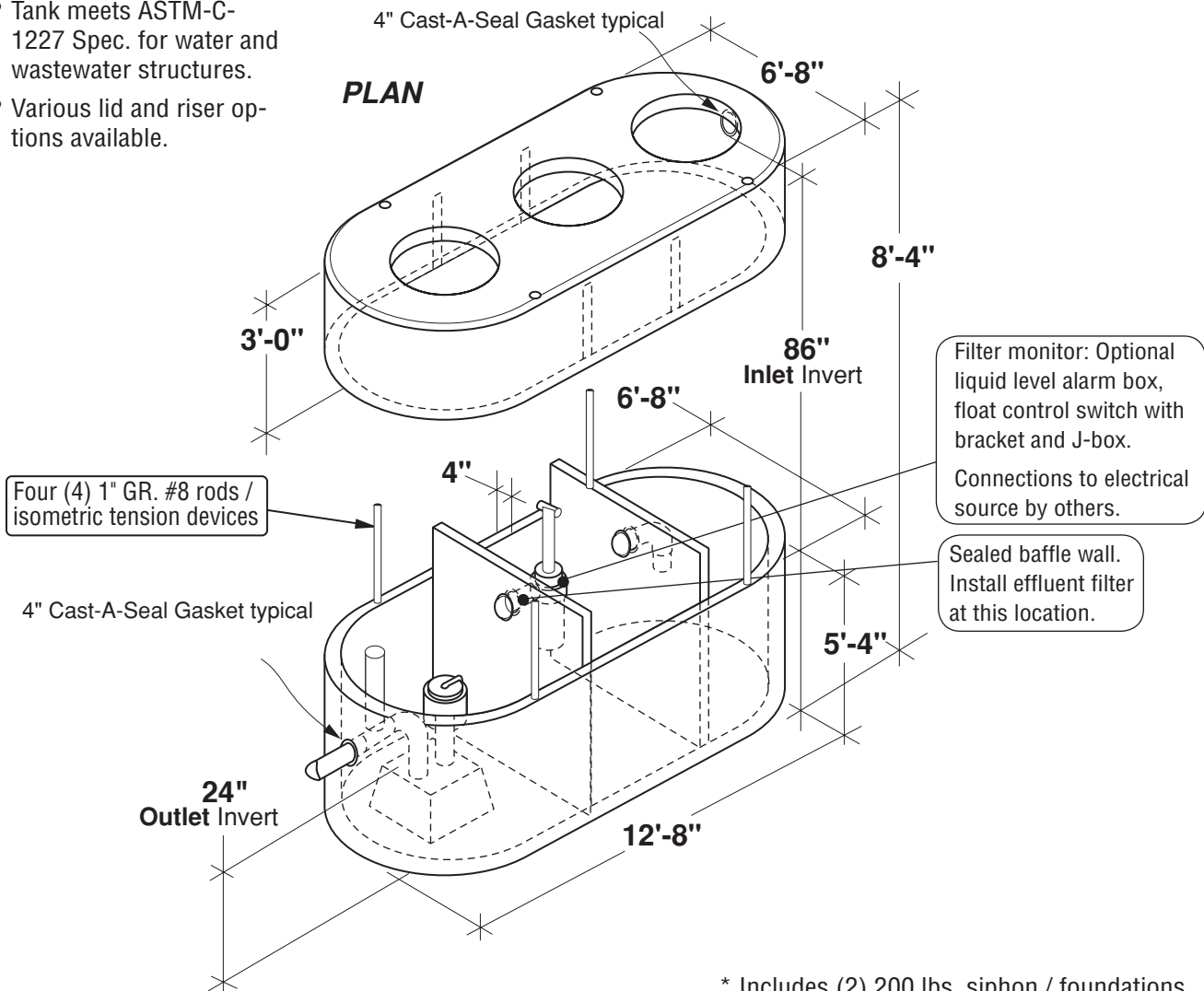
# 3250 Gal. Three Compartment Single Auto Siphon Septic Tank

FLXX®

FLXX®

**Total Capacity: 3365 gallons**

- Tank meets ASTM-C-1227 Spec. for water and wastewater structures.
- Various lid and riser options available.



\* Includes (2) 200 lbs. siphon / foundations

Part #	Capacities (gallons)		Siphon Chamber (gallons)	Siphon / Discharge		Approximate Weights			
	A	B				Tank*	Lid	Baffle Walls	Total
PCA-001-293	1,685	815	865	#417	240 Gal.	11,890 lbs	7,715 lbs	3,180 lbs	22,785 lbs

Note: N.T.S.

**FLXX®**   
**Watertight**  
**Front Range Precast Concrete, Inc.**  
 5901 Dexter Street, Unit 200, Commerce City, CO 80022  
 Phone (303) 442-3207 • (800) 783-3207 • Fax (303) 442-3209  
[www.flxx.com](http://www.flxx.com)